

1. BEARING WEIGHT INCLUDES MASONRY P.E.
* TOP PLATE BEVEL IN TRANSVERSE DIRECTION. SEE TOP PLATE DETAIL '2' [C]

GENERAL NOTES:

1. ALL STEEL : A588 U.N.O.
2. NEOPRENE : A.A.S.H.T.O. 60 DUROMETER.
3. STAINLESS FACING : 14 GA. A740-TYPE 304 MIRROR FINISH.
4. ROTATION : .86° (.015 RADIAN)
5. MOVEMENT : SEE PLAN.
6. COATING : ZINC METALIZED PER AWS C2.2 WITH 3 MIL EXTERNAL DRY COAT THICKNESS & 2 MIL INTERNAL THICKNESS.
7. X INDICATES THICK EDGE OF TOP PLATE.
8. MAGNETIC PARTICLE TESTING REQUIRED FOR 10% OF WELD LENGTH.
9. BEARINGS TO BE SHOP ASSEMBLED, MATCH MARKED, AND SHIPPED AS A UNIT.
10. UPLIFT RESTRAINTS REQUIRED FOR PIER 2-SPAN 3 BEARINGS ONLY, REFER TO DWG. D-1003-1A FOR DETAILS.
11. FOR PARTS DETAILS REFER TO DWGS. D-1001-1B THRU D-1001-1F
12. ZINC METALIZE ALL SURFACES AS PER NOTE 6 (UNLESS NOTED ON PARTS DWGS. D-1001-1D, E, F) AFTER COMPLETING ALL SHOP WELDING. MASK STAINLESS STEEL & Teflon TO PREVENT OVER SPRAY. A588 STEEL NOT METALIZED TO RECEIVE ONE COAT BOILED UNSEED OIL OR APPROVED EQUAL.

No. <u>Δ</u>	REMOVED SMAW FROM Y&W	12-13-84
No. <u>Δ</u>	REV. DIM. ① ON GEN 1800 DEG	11-14-84
No. <u>Δ</u>	Altered as per 10-11-84 approval	9-28-84 10-11-84
No. <u>Δ</u>	Dimension Changes & Uplift Details	8-6-84 [JF]
No.	REVISION	DATE

HIGH STEEL STRUCTURES, INC.

1905 Old Philadelphia Pike
Lancaster, Pennsylvania 17603
Phone 717/299-5311

A Subsidiary of High Industries, Inc.

STATE OF MAINE - DEPT. OF TRANSPORTATION
I-395 BRIDGE OVER PENOBSCOT RIVER
BANGOR - BREWER PENOBSCOT COUNTY

BEARING DETAILS BY BEARING CORP. INT'L, FAIRFIELD, N.J. JOB # 1177-4

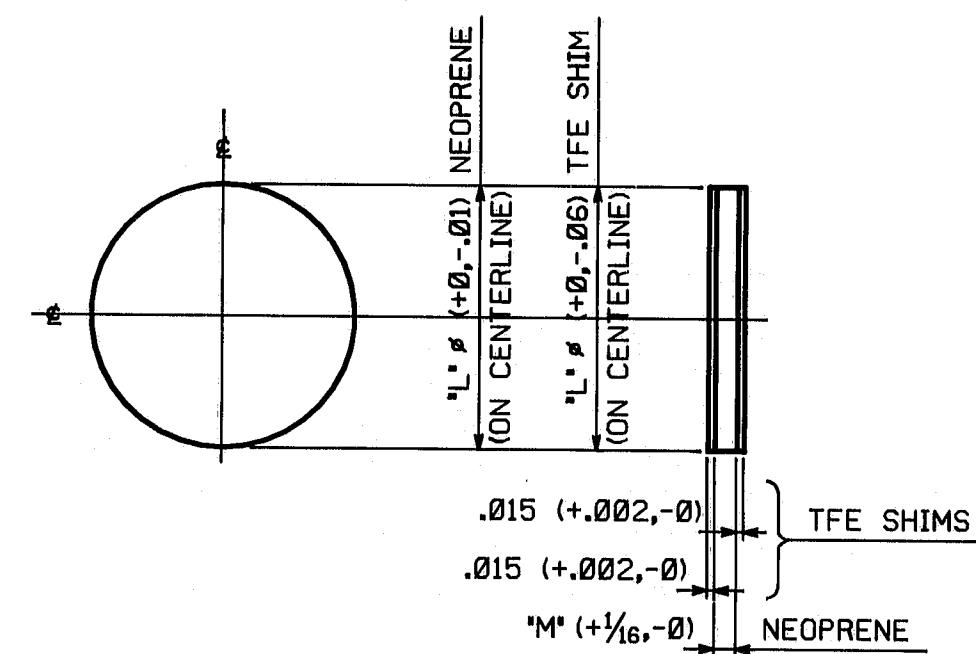
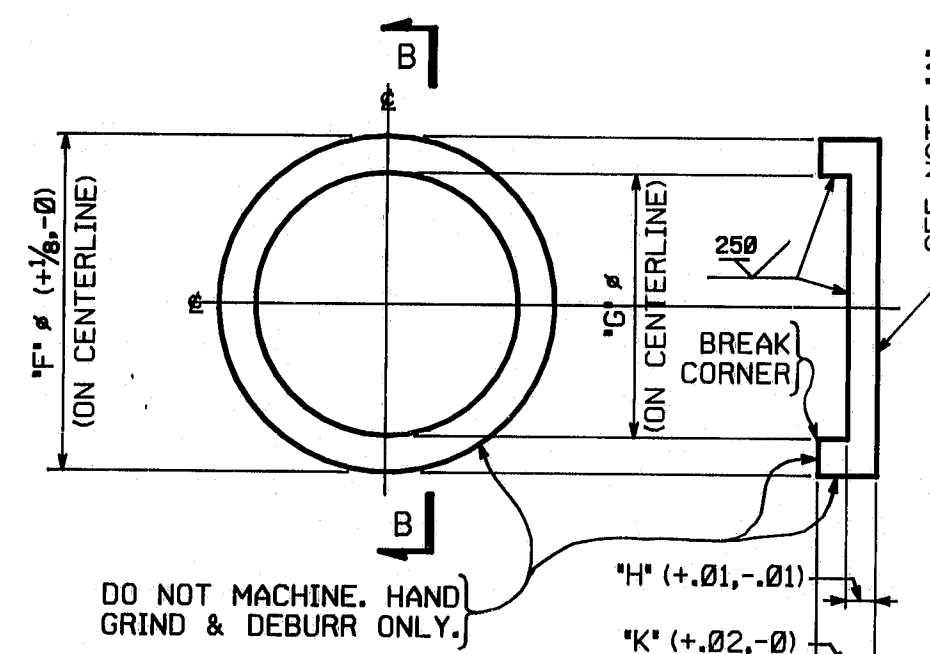
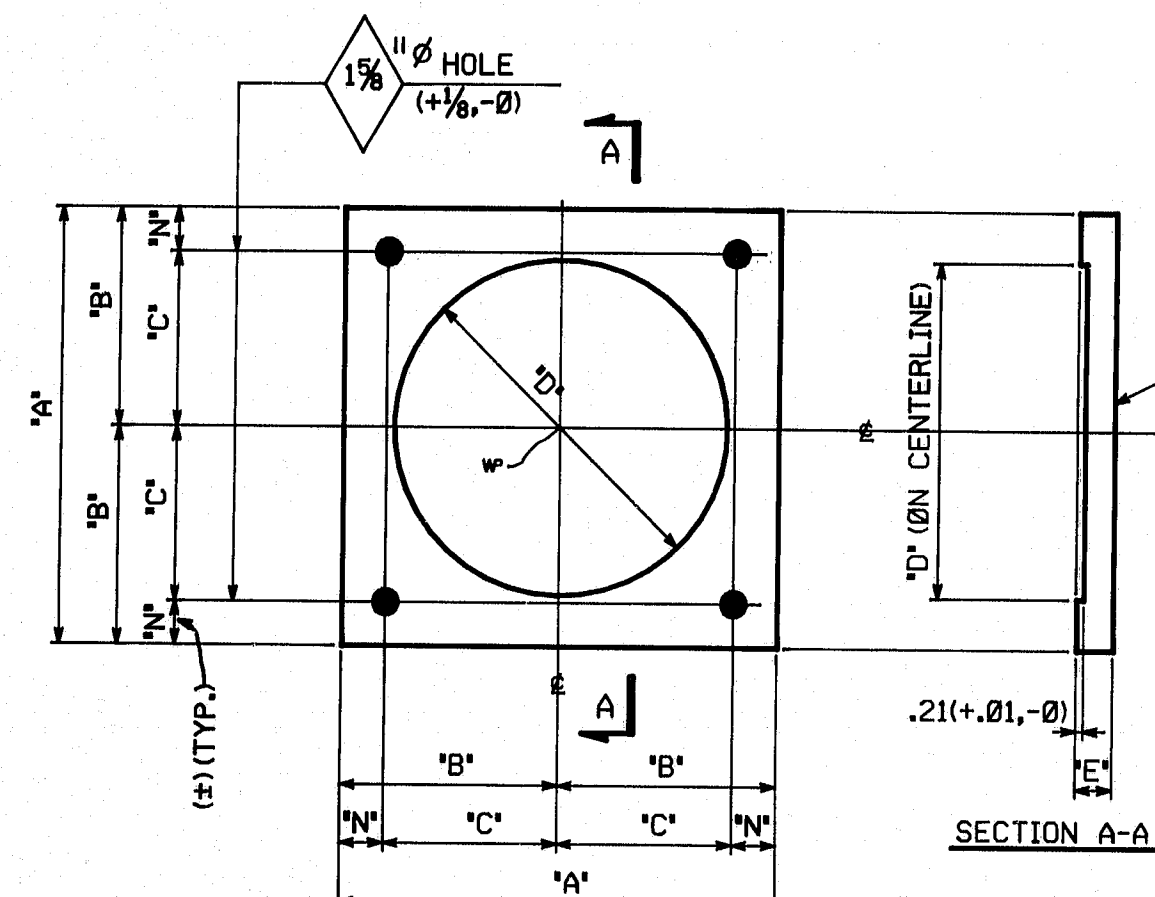
STATE CONTRACT OR REF. NO. 6 CONTRACTOR CIAMBRO CORP.

IN CHARGE: _____ DATE: _____
BY: M. BUTAS CHKD. BY: [Signature] DATE: 6-26-84

CONTRACT ME-84088-123 DRAWING NUMBER D-1001-1A

CODE: 6000

REVE ONE COAT BOILED LINSEED OIL
R95-153



MASONRY PLATES

LOCATION	GIRDER	BRG. TYPE	"A"	"B"	"C"	"D"	"E"	"H"
PIER 2	12.35 6.8,3.18	N-350(2)	1'-10 1/8"	11 1/8"	9 1/8"	1'-2 7/8"	1.46	2 1/4"
SPAN 2	4,7	G-350(2)						
ABUT. 1	12.35 6.8,3.18	N-400(2)						
ABUT. 2	12.35 6.8,3.18	N-400(7)	1'-11 1/2"	11 1/4"	9 1/2"	1'-3 3/4"	1.50	2 1/4"
ABUT. 1	4,7	G-400(2)						
ABUT. 2	4,5	G-400(7)						
PIER 1	4,7	F-900	2'-6 3/4"	1'-3 3/4"	1'-1 1/4"	1'-11"	2.08	2 1/4"
	12.35 6.8,3.18	G-900(2)						
PIER 6	12.35 6.8,3.18	N-1000(3)	2'-7 7/8"	1'-3 15/16"	1'-14 1/8"	2'-0 7/8"	2.18	2 1/4"
	4,5	G-1000(3)						
PIER 5	4,5	F-1100						
	12.35 6.8,3.18	N-1100(5)	2'-9 1/4"	1'-4 1/4"	1'-2 1/4"	2'-1 1/2"	2.27	2 1/4"
PIER 7	4,5	G-1100(5)						
	12.35 6.8,3.18	G-1100(2)						
PIER 5	12.35 6.8,3.18	N-1500(3)	3'-2 3/4"	1'-7 3/4"	1'-4 3/4"	2'-5 3/8"	2.65	3"
PIER 4	4,5	G-1500(3)						
PIER 3	12.35 6.8,3.18	N-1800(7)	3'-6 1/2"	1'-9 1/4"	1'-6 1/4"	2'-8 1/8"	2.86	3"
	4,5	G-1800(7)						
DIMENSION TOLERANCES			+1/8"-0	+1/16"-0	+1/16"-1/8"	+1/32"-0	+0.06"-0	--

BASE PLATES

LOCATION	GIRDER	BRG. TYPE	"F"	"G"	"H"	"K"
PIER 2	12.35 6.8,3.18	N-350(2)	1'-2 3/4"	10.74 (+.008,-0)	1.00	2.49
SPAN 2	4,7	G-350(2)				
ABUT. 1	12.35 6.8,3.18	N-400(2)				
ABUT. 2	12.35 6.8,3.18	N-400(7)	1'-3 3/8"	11.89 (+.009,-0)	1.02	2.53
ABUT. 1	4,7	G-400(2)				
ABUT. 2	4,5	G-400(7)				
PIER 2	12.35 6.8,3.18	N-600(3)	1'-6 1/8"	14.11 (+.010,-0)	1.20	2.93
SPAN 3	4,5	G-600(3)				
PIER 1	4,7	F-900	1'-10 1/8"	18.48 (+.010,-0)	1.50	3.70
	12.35 6.8,3.18	G-900(2)				
PIER 6	12.35 6.8,3.18	N-1000(3)	2'-0"	19.09 (+.012,-0)	1.57	3.80
	4,5	G-1000(3)				
PIER 5	4,5	F-1100				
	12.35 6.8,3.18	N-1100(5)	2'-1 1/8"	20.16 (+.012,-0)	1.71	4.10
PIER 7	4,5	G-1100(5)				
	12.35 6.8,3.18	G-1100(2)				
PIER 5	12.35 6.8,3.18	N-1500(3)	2'-5 1/4"	23.32 (+.012,-0)	1.95	4.56
PIER 4	4,5	G-1500(3)				
PIER 3	12.35 6.8,3.18	N-1800(7)	2'-8"	25.63 (+.012,-0)	2.08	5.00
	4,5	G-1800(7)				

NEOPRENE AND TFE SHIMS

LOCATION	GIRDER	BRG. TYPE	"L"	"M"
PIER 2	12.35 6.8,3.18	N-350(2)	10.74	3/4"
SPAN 2	4,7	G-350(2)		
ABUT. 1	12.35 6.8,3.18	N-400(2)		
ABUT. 2	12.35 6.8,3.18	N-400(7)	11.89	3/4"
ABUT. 1	4,7	G-400(2)		
ABUT. 2	4,5	G-400(7)		
PIER 2	12.35 6.8,3.18	N-600(3)	14.11	1"
SPAN 3	4,5	G-600(3)		
PIER 1	4,7	F-900	18.48	1 1/4"
	12.35 6.8,3.18	G-900(2)		
PIER 6	12.35 6.8,3.18	N-1000(3)	19.09	1 1/4"
	4,5	G-1000(3)		
PIER 5	4,5	F-1100		
	12.35 6.8,3.18	N-1100(5)	20.16	1 3/8"
PIER 7	4,5	G-1100(5)		
	12.35 6.8,3.18	G-1100(2)		
PIER 5	12.35 6.8,3.18	N-1500(3)	23.32	1 1/2"
PIER 4	4,5	G-1500(3)		
PIER 3	12.35 6.8,3.18	N-1800(7)	25.63	1 3/4"
	4,5	G-1800(7)		

REQUIRED PER SHIPMENT		BILL OF MATERIAL		FED. ROAD DIV. NO.		STATE		FED. AID PROJ. NO.	
#1	#2	#3	NO.	BRG. TYPE	DESCRIPTION	LENGTH	REMARKS	ITEM	SHIP. WEIGHT
10	--	--	10	350	22 1/2" x 1.46	1	10 1/2"	1A	10
10	--	8	18	400	23 1/2" x 1.50	1	11 1/2"	1A	9
10	--	--	10	900	30 3/4" x 2.06	2	6 1/2"	1A	7
--	--	8	8	1000	31 1/2" x 2.18	2	7 1/2"	1A	6
--	--	16	16	1100	33 1/4" x 2.27	2	9 1/4"	1A	5
--	8	--	8	1500	38 3/4" x 2.85	3	2 1/2"	1A	4
--	8	--	8	1800	42 1/2" x 2.86	3	6 1/2"	1A	3
BASE PLATES									
10	--	--	10	350	1'-2 3/4" x 2.49" THK.			1A	20
10	--	8	18	400	1'-3 3/8" x 2.53" THK.			1A	19
--	8	--	8	600	1'-6 1/8" x 2.93" THK.			1A	18
10	--	--	10	900	1'-10 1/8" x 3.70" THK.			1A	17
--	--	8	8	1000	2'-0" x 3.80" THK.			1A	16
--	--	16	16	1100	2'-1 1/8" x 4.10" THK.			1A	15
--	8	--	8	1500	2'-5 1/4" x 4.56" THK.			1A	14
--	8	--	8	1800	2'-8" x 5.00" THK.			1A	13
NEOPRENE									
10	--	--	10	350	10.74" x 3/4" THK.		ASHTO GRADE 50 DUROMETER	1D	10
10	--	8	18	400	11.89" x 3/4" THK.		ASHTO GRADE 50 DUROMETER	1D	9
--	8	--	8	600	14.11" x 1" THK.		ASHTO GRADE 50 DUROMETER	1D	8
10	--	--	10	900	18.48" x 1 1/4" THK.		ASHTO GRADE 50 DUROMETER	1D	7
--	--	8	8	1000	19.09" x 1 1/4" THK.		ASHTO GRADE 50 DUROMETER	1D	6
--	--	16	16	1100	20.16" x 1 3/8" THK.		ASHTO GRADE 50 DUROMETER	1D	5
--	8	--	8	1500	23.32" x 1 1/2" THK.		ASHTO GRADE 50 DUROMETER	1D	4
--	8	--	8	1800	25.63" x 1 3/4" THK.		ASHTO GRADE 50 DUROMETER	1D	3
TFE SHIMS									
20	--	--	20	350	10.74" x .015" THK.		VIRGIN CHEMFLUOR T.F.E.	1D	21
20	--	16	36	400	11.89" x .015" THK.		VIRGIN CHEMFLUOR T.F.E.	1D	20
--	16	--	16	600	14.11" x .015" THK.		VIRGIN CHEMFLUOR T.F.E.	1D	19
20	--	--	20	900	18.48" x .015" THK.		VIRGIN CHEMFLUOR T.F.E.	1D	18
--	--	16	16	1000	19.09" x .015" THK.		VIRGIN CHEMFLUOR T.F.E.	1D	17
--	--	32	32	1100	20.16" x .015" THK.		VIRGIN CHEMFLUOR T.F.E.	1D	16
--	16	--	16	1500	23.32" x .015" THK.		VIRGIN CHEMFLUOR T.F.E.	1D	15
--	16	--	16	1800	25.63" x .015" THK.		VIRGIN CHEMFLUOR T.F.E.	1D	14

NOTES:

NOTE "A": SURFACES INDICATED ARE TO BE STRAIGHT AND TRUE; FINISH IF NECESSARY.

ALL DIMENSIONS GIVEN THUS: 1.46 ARE DECIMALS OF AN INCH.

FOR NOTES AND REFERENCE, SEE DRAWING D-1001-1A.

MATERIAL TO BE ASTM A588 (U.N.)

SHOP NOTE

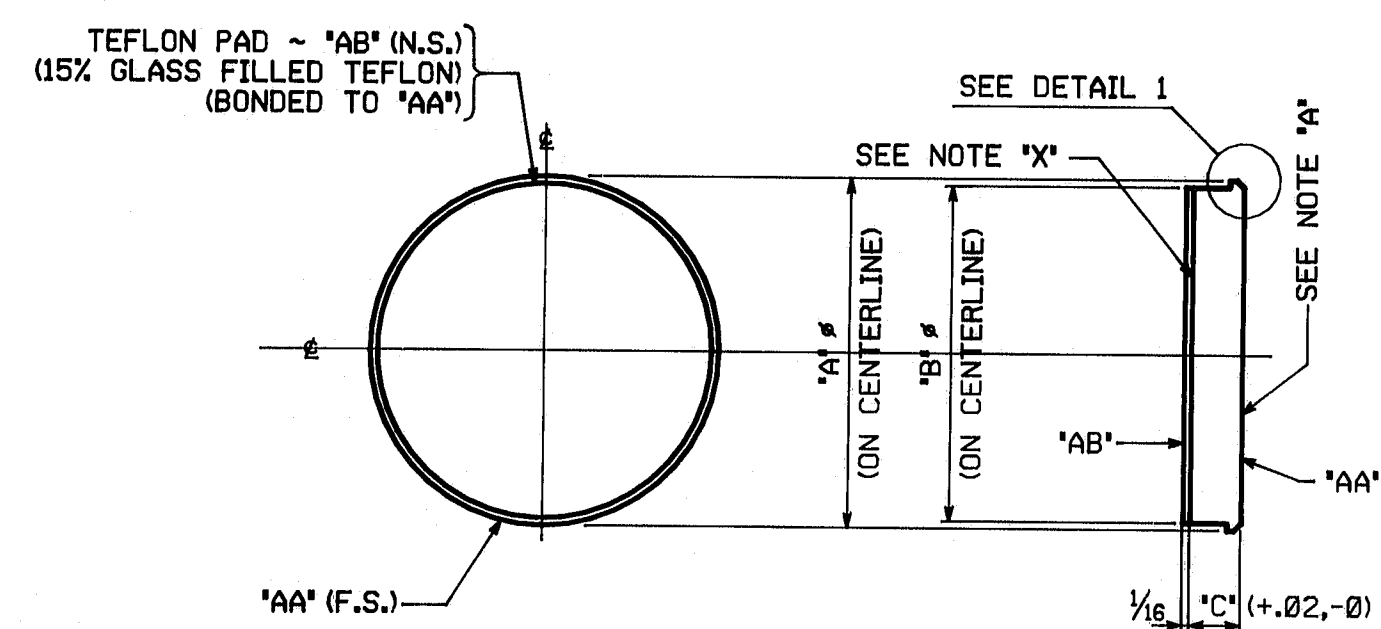
HOLES: AS NOTED

BOLTS: NONE

R95-154

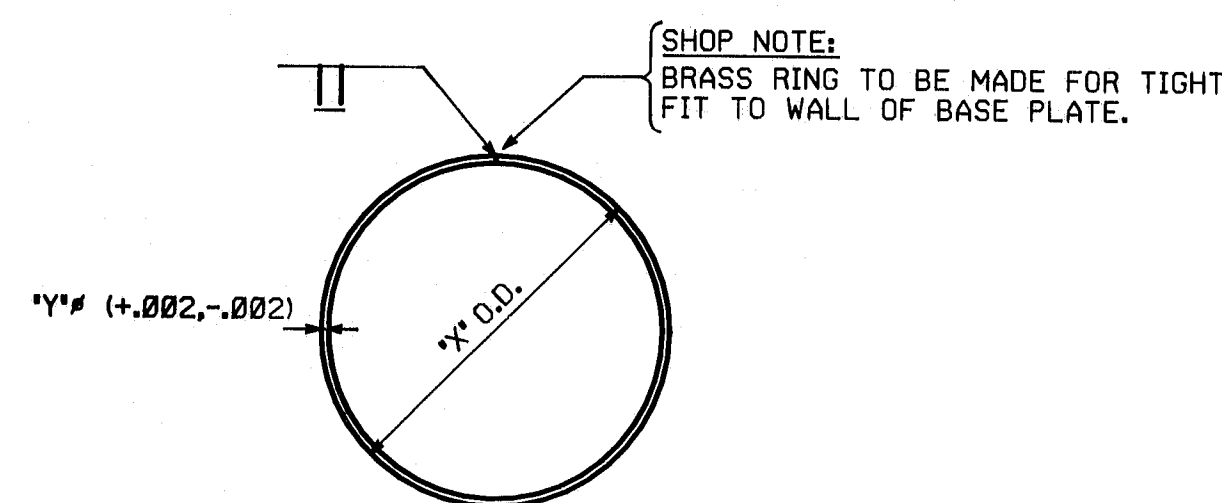
NO. 1	REVISION	REV. DATE	DATE 11-14-84
NO. 1	REVISION	DATE 9-28-84	DATE 11-14-84
HIGH STEEL STRUCTURES, INC. 1905 Old Philadelphia Pike Lancaster, Pennsylvania 17603 Phone 717/299-528 A Subsidiary of High Industries, Inc.			
POT BEARING DETAILS I-395 BRIDGE OVER PENOBSCOT RIVER I-395 BRIDGE STA. 164+60.00 PENOBSCOT COUNTY STATE OF MAINE DEPARTMENT OF TRANSPORTATION			
STATE CONTRACT OR REF. NO.	6	CONTRACTOR	CIANBRO CORP.
IN CHARGE	HINKLE	MADE BY	B.J.K.
DATE	7-2-84	DATE	7-2-84
CONTRACT NUMBER	ME-84088-1,2,3	DRAWING NUMBER	D-1001-1B

DETAIL 1



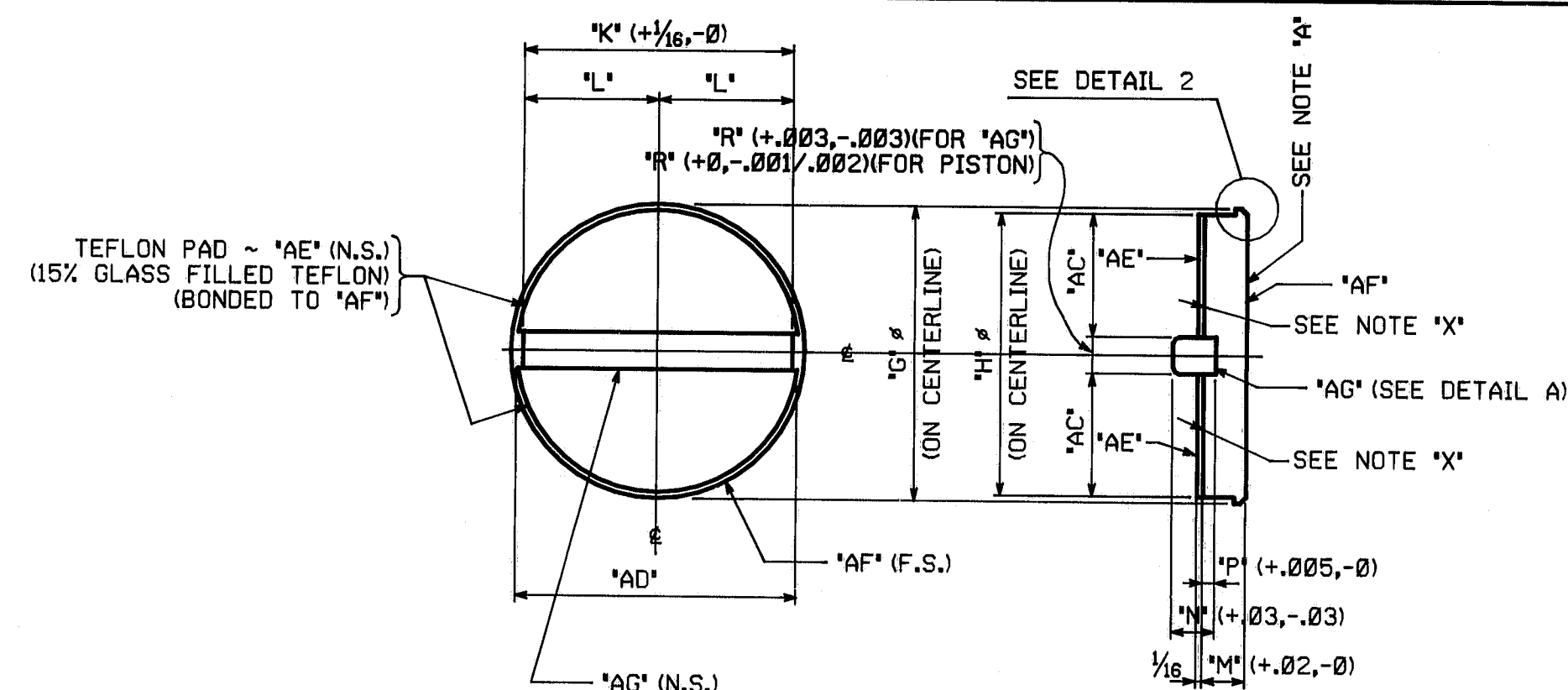
PISTONS - NON GUIDED

LOCATION	GIRDER	BRG. TYPE	'A' Δ	'B' Δ	'C' Δ	'D' Δ	'E' Δ	'F' Δ	'AA' Δ	'AB' Δ
PIER 2 SPAN 2	12.35 6.63.18	N-350(2)	10.72 (+0, -.008)	10.58	1.33	.07	.13	.37	ba	bk
ABUT. 1	12.35 6.63.18	N-400(2)	11.87 (+0, -.009)	11.71	1.36	.08	.13	.37	bb	bm
ABUT. 2	12.35 6.63.18	N-400(7)	11.87 (+0, -.009)	11.71	1.36	.08	.13	.37	bb	bm
PIER 6	12.35 6.63.18	N-600(9)	14.07 (+0, -.010)	13.91	1.46	.08	.14	.37	bc	bn
PIER 7	12.35 6.63.18	N-1000(3)	19.04 (+0, -.012)	18.84	1.77	.10	.18	.50	bd	bp
PIER 4	12.35 6.63.18	N-1500(3)	23.27 (+0, -.012)	23.05	2.04	.11	.24	.56	bg	bt
PIER 3	12.35 6.63.18	N-1800(7)	25.58 (+0, -.012)	25.36	2.14	.11	.27	.56	bh	bw



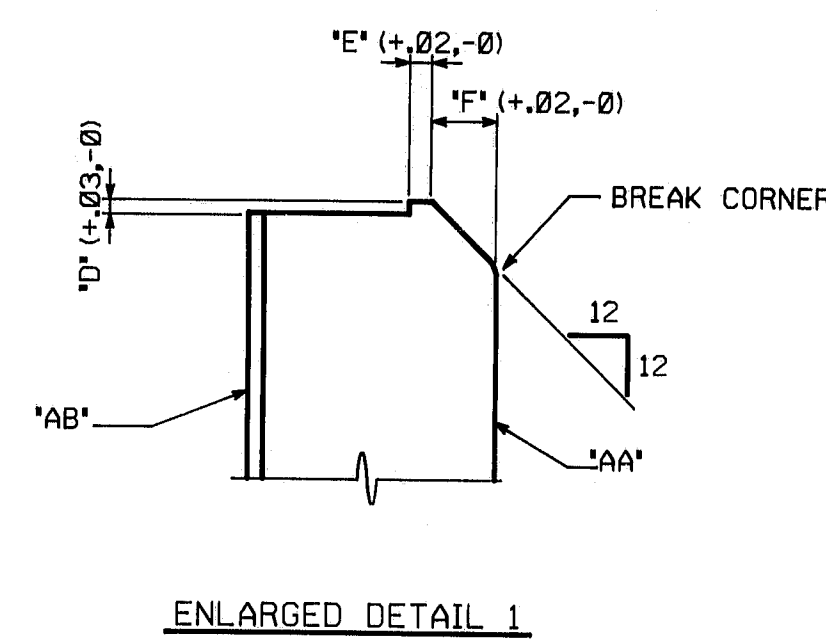
BRASS SEALING RINGS

LOCATION	GIRDER	BRG. TYPE	'X' Δ	'Y' Δ
PIER 2 SPAN 2	12.35 6.63.18	N-350(2)	10.74	5/16
ABUT. 1	12.35 6.63.18	N-400(2)	11.89	5/16
ABUT. 2	12.35 6.63.18	N-400(7)	11.89	5/16
ABUT. 1	12.35 6.63.18	N-400(2)	11.89	5/16
ABUT. 2	12.35 6.63.18	N-400(7)	11.89	5/16
PIER 2 SPAN 3	12.35 6.63.18	N-600(9)	14.11	5/16
PIER 1	12.35 6.63.18	N-900(2)	18.48	3/8
PIER 6	12.35 6.63.18	N-1000(3)	19.09	3/8
PIER 5	12.35 6.63.18	N-1100(5)	20.16	3/8
PIER 7	12.35 6.63.18	N-1100(5)	20.16	3/8
PIER 5	12.35 6.63.18	N-1100(2)	20.16	3/8
PIER 4	12.35 6.63.18	N-1500(3)	23.32	1/2
PIER 3	12.35 6.63.18	N-1800(7)	25.63	1/2

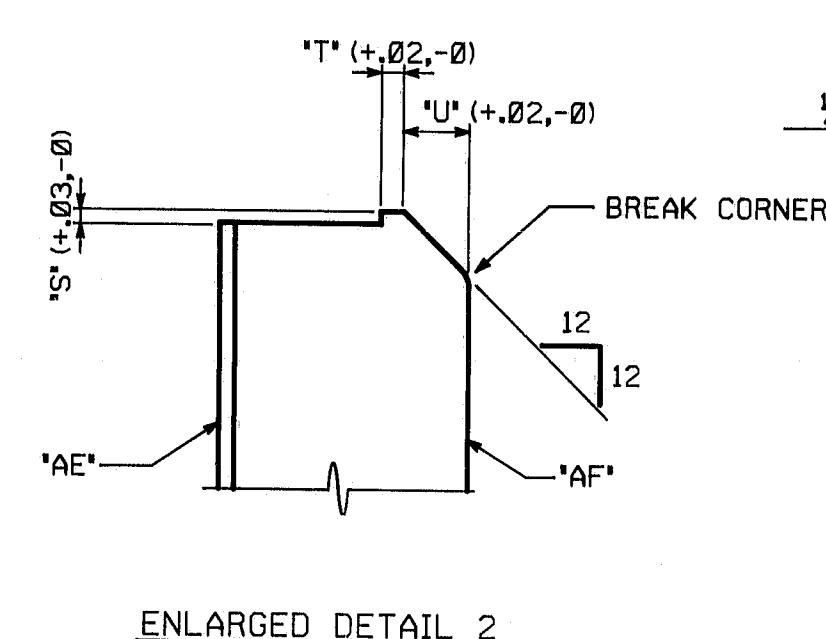


PISTONS - GUIDED

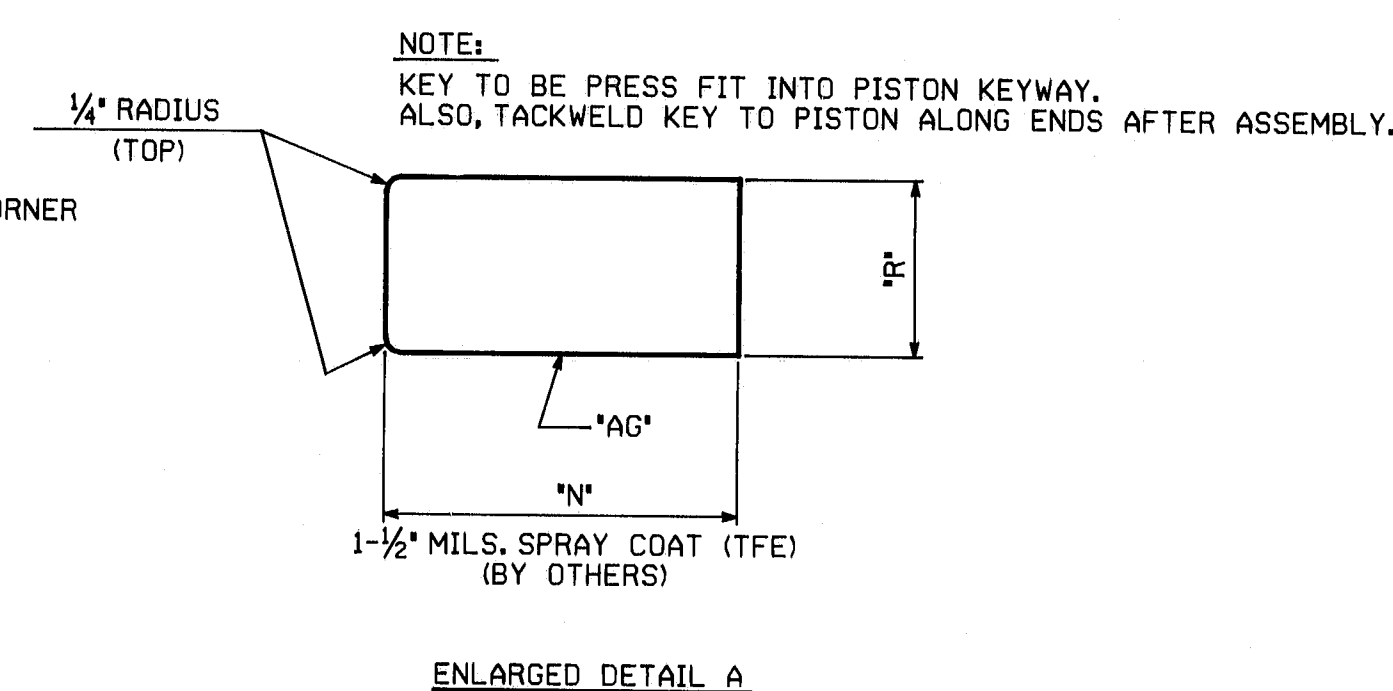
LOCATION	GIRDER	BRG. TYPE	'G' Δ	'H' Δ	'K' Δ	'L' Δ	'M' Δ	'N' Δ	'P' Δ	'R' Δ	'S' Δ	'T' Δ	'U' Δ	'AC' Δ	'AD' Δ	'AE' Δ	'AF' Δ	'AG' Δ
PIER 2 SPAN 2	4,7	G-350(2)	10.72 (+0, -.008)	10.58	10 1/16	5 1/2	1.33	1'	.37	.500	.07	.13	.37	5.04	10.5682	by	bak	bba
ABUT. 1	4,7	G-400(2)	11.87 (+0, -.009)	11.71	11 1/16	5 1/2	1.36	1'	.37	.500	.08	.13	.37	5.605	11.6993	baa	bam	bbb
ABUT. 2	4,5	G-400(7)	11.87 (+0, -.009)	11.71	11 1/16	5 1/2	1.36	1'	.37	.500	.08	.13	.37	5.605	11.6993	baa	bam	bbb
PIER 1	12.35 6.63.18	G-900(2)	18.43 (+0, -.010)	18.25	1'-5 1/8	8 1/16	1.73	1 1/4	.45	.750	.09	.17	.50	8.75	18.2346	bac	bap	bba
PIER 6	12.35 6.63.18	G-1000(3)	19.04 (+0, -.012)	18.84	1'-6 1/4	9 1/16	1.77	1 1/4	.45	.750	.10	.18	.50	9.045	18.8251	bad	bas	bbf
PIER 7	12.35 6.63.18	G-1100(5)	20.11 (+0, -.012)	19.91	1'-7 3/16	9 1/16	1.83	1 1/2	.55	1.000	.10	.21	.50	9.455	19.8849	baf	bat	bbg
PIER 5	12.35 6.63.18	G-1100(2)	20.11 (+0, -.012)	19.91	1'-7 3/16	9 1/16	1.83	1 1/2	.55	1.000	.10	.21	.50	9.455	19.8849	baf	bat	bbg
PIER 4	12.35 6.63.18	G-1500(3)	23.27 (+0, -.012)	23.05	1'-10 1/16	11 1/32	2.04	1 1/2	.55	1.000	.11	.24	.56	11.025	23.0283	bog	baw	bhh
PIER 3	12.35 6.63.18	G-1800(7)	25.58 (+0, -.012)	25.36	2'-0 3/4	1'-0 3/8	2.14	1 3/4	.68	1.000	.11	.27	.56	12.18	25.3403	bah	bay	bbk



ENLARGED DETAIL 1



ENLARGED DETAIL 2



ENLARGED DETAIL A

NOTES:

NOTE 'A': SURFACES INDICATED ARE TO BE STRAIGHT AND TRUE; FINISH IF NECESSARY.

NOTE 'X': SURFACES INDICATED ARE TO BE MACHINED FLAT TO .01'/.04' MAXIMUM

ALL DIMENSIONS GIVEN THUS: 12.21 ARE DECIMALS OF AN INCH. FOR NOTES AND REFERENCE, SEE DRAWING D-1001-1A. MATERIAL TO BE ASTM A588 (U.N.)

SHOP NOTE

HOLES: NONE
BOLTS: NONE

REQUIRED PER SHIPMENT		
#1	#2	#3
10	--	--
10	--	8
--	8	--
10	--	--
--	--	8
--	--	16
--	8	--
--	8	--

BILL OF MATERIAL

REQUIRED PER SHIPMENT		
#1	#2	#3
8	--	--
8	--	6
--	6	--
--	--	6
--	--	6
--	6	--
--	6	--
8	--	--

BILL OF MATERIAL

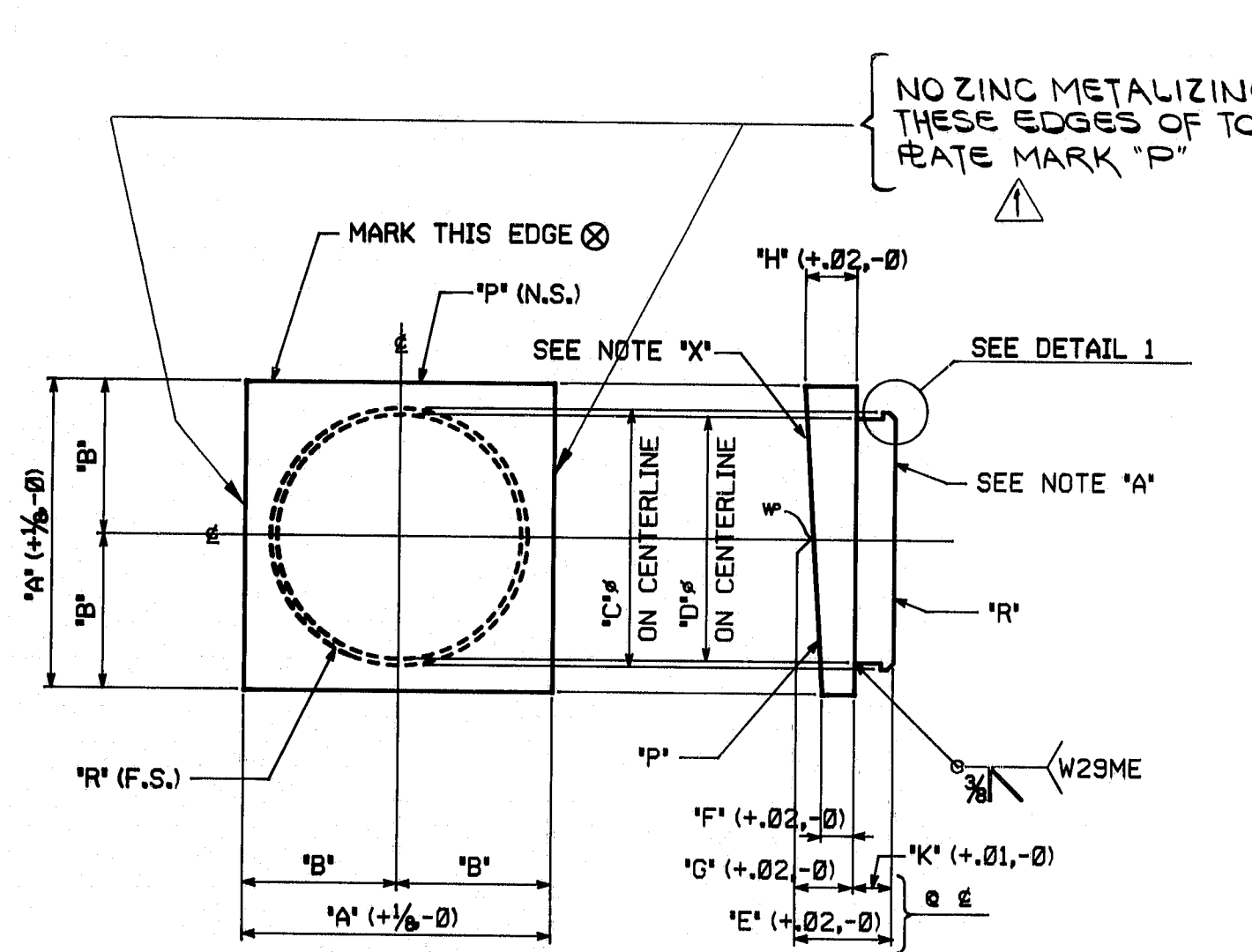
PER SHIPMENT			DESCRIPTION OF MATERIAL					ITEM	SHIP WEIGHT KG.
NO.	MARK	DESCRIPTION	LENGTH	REMARKS					
#1	#2	#3							
PISTONS-NON-GUIDED									
8	--	--	8	ba	10.72" x 1.33" THK.	FOR BRG. TYPE 350	1A	30	
8	--	--	6	bb	11.87" x 1.36" THK.	FOR BRG. TYPE 400	1A	29	
--	--	--	6	bc	14.07" x 1.46" THK.	FOR BRG. TYPE 600	1A	28	
--	--	--	6	bd	19.04" x 1.77" THK.	FOR BRG. TYPE 1000	1A	26	
--	--	--	6	bf	20.11" x 1.83" THK.	FOR BRG. TYPE 1100	1A	25	
--	--	--	6	bg	23.27" x 2.04" THK.	FOR BRG. TYPE 1500	1A	24	
--	--	--	6	bh	25.58" x 2.14" THK.	FOR BRG. TYPE 1800	1A	23	
8	--	--	8	bk	PAD 10.58" x 1/8" THK.	ISOGLOSS FILL TEFLON FOR BRG. TYPE 350	1E	9	
--	--	--	6	bl	PAD 11.71" x 1/8" THK.	ISOGLOSS FILL TEFLON FOR BRG. TYPE 400	1E	8	
--	--	--	6	bn	PAD 13.91" x 1/8" THK.	ISOGLOSS FILL TEFLON FOR BRG. TYPE 600	1E	7	
--	--	--	6	bp	PAD 18.84" x 1/8" THK.	ISOGLOSS FILL TEFLON FOR BRG. TYPE 1000	1E	6	
--	--	--	6	bs	PAD 19.91" x 1/8" THK.	ISOGLOSS FILL TEFLON FOR BRG. TYPE 1100	1E	5	
--	--	--	6	bt	PAD 23.05" x 1/8" THK.	ISOGLOSS FILL TEFLON FOR BRG. TYPE 1500	1E	4	
--	--	--	6	bw	PAD 25.36" x 1/8" THK.	ISOGLOSS FILL TEFLON FOR BRG. TYPE 1800	1E	3	
PISTONS-GUIDED									
2	--	--	2	bak	10.72" x 1.33" THK.	FOR BRG. TYPE 350	1A	30	
--	--	--	2	bam	11.87" x 1.36" THK.	FOR BRG. TYPE 400	1A	29	
--	--	--	2	ban	14.07" x 1.46" THK.	FOR BRG. TYPE 600	1A	28	
8	--	--	8	bap	18.43" x 1.73" THK.	FOR BRG. TYPE 900	1A	27	
--	--	--	2	bas	19.04" x 1.77" THK.	FOR BRG. TYPE 1000	1A	26	
--	--	--	8	bat	20.11" x 1.83" THK.	FOR BRG. TYPE 1100	1A	25	
--	--	--	2	baw	23.27" x 2.04" THK.	FOR BRG. TYPE 1500	1A	24	
--	--	--	2	bay	25.58" x 2.14" THK.	FOR BRG. TYPE 1800	1A	23	
2	--	--	2	bba	BAR 1' x .5 0 10/16	FOR BRG. TYPE 350 COLD DRAWN (C1018)	1B	30	
--	--	--	2	bbb	BAR 1' x .5 0 1 1/16	FOR BRG. TYPE 400 COLD DRAWN (C1018)	1B	29	
--	--	--	2	bbc	BAR 1 1/4 x .75 1 15/16	FOR BRG. TYPE 600 COLD DRAWN (C1018)	1B	8	
8	--	--	8	bbd	BAR 1 1/4 x .75 1 5/8	FOR BRG. TYPE 900 COLD DRAWN (C1018)	1B	7	
--	--	--	2	bbf	BAR 1 1/4 x .75 1 6/16	FOR BRG. TYPE 1000 COLD DRAWN (C1018)	1B	6	
--	--	--	8	bbg	BAR 1 1/2 x 1' 1 7/16	FOR BRG. TYPE 1100 COLD DRAWN (C1018)	1B	5	
--	--	--	2	bbh	BAR 1 1/2 x 1' 1 10/16	FOR BRG. TYPE 1500 COLD DRAWN (C1018)	1B	4	
--	--	--	2	bbk	BAR 1 3/4 x 1' 2 0/16	FOR BRG. TYPE 1800 COLD DRAWN (C1018)	1B	3	
4	--	--	4	bu	PAD 5.0405"x10.5682	ISOGLOSS FILL TEFLON FOR BRG. TYPE 350	1E	18	
4	--	--	4	baa	PAD 5.6055"x11.6993	ISOGLOSS FILL TEFLON FOR BRG. TYPE 400	1E	17	
--	--	--	4	bab	PAD 6.5805"x13.8898	ISOGLOSS FILL TEFLON FOR BRG. TYPE 600	1E	16	
16	--	--	16	bac	PAD 8.7555"x18.2346	ISOGLOSS FILL TEFLON FOR BRG. TYPE 900	1E	15	
--	--	--	4	bad	PAD 9.0455"x18.8251	ISOGLOSS FILL TEFLON FOR BRG. TYPE 1000	1E	14	
--	--	--	16	baf	PAD 9.4555"x19.8849	ISOGLOSS FILL TEFLON FOR BRG. TYPE 1100	1E	13	
--	--	--	4	bag	PAD 11.0255"x23.0283	ISOGLOSS FILL TEFLON FOR BRG. TYPE 1500	1E	12	
--	--	--	4	bah	PAD 12.1855"x25.3403	ISOGLOSS FILL TEFLON FOR BRG. TYPE 1800	1E	11	

△

NO. △	REVISION	DATE	9-28-84
HIGH STEEL STRUCTURES, INC.			
POT BEARING DETAILS			
I-395 BRIDGE OVER PENOBSCOT RIVER			
I-395 BRIDGE STA. 164+60.00			
PENOBSCOT COUNTY			
STATE OF MAINE			
DEPARTMENT OF TRANSPORTATION			
STATE CONTRACT OR REF. NO.	6	CONTRACTOR	CIANBRO CORP.
IN CHARGE	HINKLE	MADE BY	B.J.K.
CHK.D. BY	JCH	DATE	7-2-84
CONTRACT NUMBER	ME-84088-1,2,3	DRAWING NUMBER	D-1001-1C

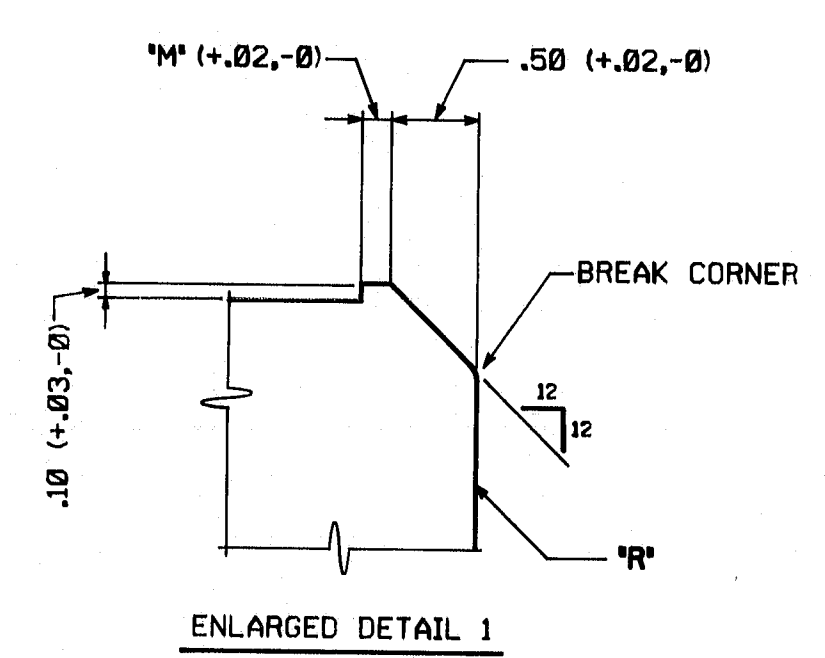
R95-155

CODE:6000



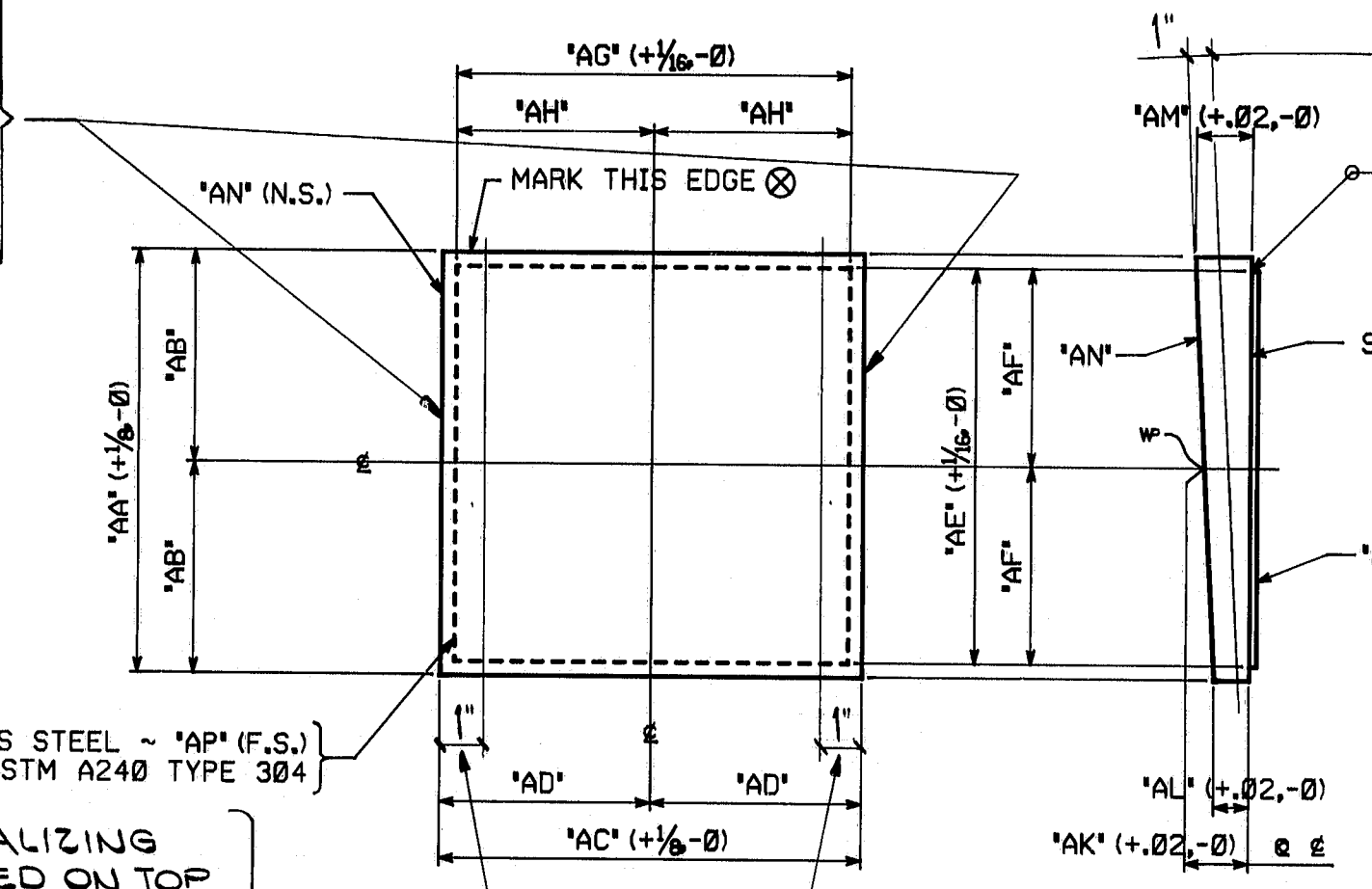
SOLE PLATE/PISTON PLATE - FIXED

LOCATION	GIRDER	BRG. TYPE	'A'	'B'	'C'	'D'	'E'	'F'	'G'	'H'	'I'	'J'	'K'	'L'	'M'	'N'	'O'
PIER 1	4	F-900	1'-10 1/2"	11 1/8"	18.43 (+0, -.010)	18.23	2.95	.97	1.22	1.47	1.73	.17	bbm	bbn	bbp	bbq	bbt
	7	F-900	1'-10 1/2"	11 1/8"	18.43 (+0, -.010)	18.23	2.95	.95	1.22	1.49	1.73	.17	bbn	bbp	bbq	bbt	bbu
PIER 5	4,5	F1100	2'-1 1/2"	1'-0 1/2"	20.11 (+0, -.012)	19.91	3.05	1.04	1.22	1.40	1.83	.21	bbp	bbt	bbu	bbv	bbw



NO ZINC METALIZING THESE EDGES OF TOP PLATE MARK 'AN' FOR ALL BRGS. TYPE 350(2) & 400(2)

NO ZINC METALIZING THESE EDGES OF TOP PLATE MARK 'P' FOR ALL BRGS. TYPE 1500(3); 1800(7) & 400(7)



SOLE PLATES - NON GUIDED

LOCATION	GIRDER	BRG. TYPE	'AA'	'AB'	'AC'	'AD'	'AE'	'AF'	'AG'	'AH'	'AI'	'AJ'	'AK'	'AL'	'AM'	'AN'	'AO'
PIER 2	1	N-350(2)	1'-3 3/4"	7 7/8"	1'-2 3/4"	7 7/8"	1'-3 3/4"	7 7/8"	1'-2 3/4"	7 7/8"	1'-3 3/4"	7 7/8"	1'-2 3/4"	7 7/8"	1'-3 3/4"	7 7/8"	1'-2 3/4"
	2	N-350(2)	1'-3 3/4"	7 7/8"	1'-2 3/4"	7 7/8"	1'-3 3/4"	7 7/8"	1'-2 3/4"	7 7/8"	1'-3 3/4"	7 7/8"	1'-2 3/4"	7 7/8"	1'-3 3/4"	7 7/8"	1'-2 3/4"
ABUT. 1	1	N-400(2)	1'-4 1/2"	8 1/2"	1'-3 3/4"	7 7/8"	1'-4 1/2"	8 1/2"	1'-3 3/4"	7 7/8"	1'-4 1/2"	8 1/2"	1'-3 3/4"	7 7/8"	1'-4 1/2"	8 1/2"	1'-3 3/4"
	3,5	N-400(2)	1'-4 1/2"	8 1/2"	1'-3 3/4"	7 7/8"	1'-4 1/2"	8 1/2"	1'-3 3/4"	7 7/8"	1'-4 1/2"	8 1/2"	1'-3 3/4"	7 7/8"	1'-4 1/2"	8 1/2"	1'-3 3/4"
ABUT. 2	1	N-400(7)	1'-9 1/2"	10 1/2"	1'-4 1/2"	8 1/2"	1'-9 1/2"	10 1/2"	1'-4 1/2"	8 1/2"	1'-9 1/2"	10 1/2"	1'-4 1/2"	8 1/2"	1'-9 1/2"	10 1/2"	1'-4 1/2"
	2,3,6,7,8	N-400(7)	1'-9 1/2"	10 1/2"	1'-4 1/2"	8 1/2"	1'-9 1/2"	10 1/2"	1'-4 1/2"	8 1/2"	1'-9 1/2"	10 1/2"	1'-4 1/2"	8 1/2"	1'-9 1/2"	10 1/2"	1'-4 1/2"
PIER 6	1,2,3,6,7,8	N-1000(3)	2'-1 1/2"	1'-0 1/2"	2'-1 1/2"	1'-0 1/2"	2'-1 1/2"	1'-0 1/2"	2'-1 1/2"	1'-0 1/2"	2'-1 1/2"	1'-0 1/2"	2'-1 1/2"	1'-0 1/2"	2'-1 1/2"	1'-0 1/2"	2'-1 1/2"
	1,2,3,6	N-1100(5)	2'-4 1/2"	1'-2 3/4"	2'-1 1/2"	1'-0 1/2"	2'-4 1/2"	1'-2 3/4"	2'-1 1/2"	1'-0 1/2"	2'-4 1/2"	1'-2 3/4"	2'-1 1/2"	1'-0 1/2"	2'-4 1/2"	1'-2 3/4"	2'-1 1/2"
PIER 7	7,8	N-1100(5)	2'-4 1/2"	1'-2 3/4"	2'-1 1/2"	1'-0 1/2"	2'-4 1/2"	1'-2 3/4"	2'-1 1/2"	1'-0 1/2"	2'-4 1/2"	1'-2 3/4"	2'-1 1/2"	1'-0 1/2"	2'-4 1/2"	1'-2 3/4"	2'-1 1/2"
	1	N-1500(3)	2'-6 1/2"	1'-3 3/4"	2'-5 1/2"	1'-2 3/4"	2'-6 1/2"	1'-3 3/4"	2'-5 1/2"	1'-2 3/4"	2'-6 1/2"	1'-3 3/4"	2'-5 1/2"	1'-2 3/4"	2'-6 1/2"	1'-3 3/4"	2'-5 1/2"
PIER 4	2,3	N-1500(3)	2'-6 1/2"	1'-3 3/4"	2'-5 1/2"	1'-2 3/4"	2'-6 1/2"	1'-3 3/4"	2'-5 1/2"	1'-2 3/4"	2'-6 1/2"	1'-3 3/4"	2'-5 1/2"	1'-2 3/4"	2'-6 1/2"	1'-3 3/4"	2'-5 1/2"
	6	N-1500(3)	2'-6 1/2"	1'-3 3/4"	2'-5 1/2"	1'-2 3/4"	2'-6 1/2"	1'-3 3/4"	2'-5 1/2"	1'-2 3/4"	2'-6 1/2"	1'-3 3/4"	2'-5 1/2"	1'-2 3/4"	2'-6 1/2"	1'-3 3/4"	2'-5 1/2"
PIER 3	1	N-1800(7)	3'-1 1/2"	1'-6 1/2"	2'-9 1/2"	1'-4 1/2"	3'-0 1/2"	1'-6 1/2"	2'-9 1/2"	1'-4 1/2"	3'-0 1/2"	1'-6 1/2"	2'-9 1/2"	1'-4 1/2"	3'-0 1/2"	1'-6 1/2"	2'-9 1/2"
	2	N-1800(7)	3'-1 1/2"	1'-6 1/2"	2'-9 1/2"	1'-4 1/2"	3'-0 1/2"	1'-6 1/2"	2'-9 1/2"	1'-4 1/2"	3'-0 1/2"	1'-6 1/2"	2'-9 1/2"	1'-4 1/2"	3'-0 1/2"	1'-6 1/2"	2'-9 1/2"
PIER 5	3	N-1800(7)	3'-1 1/2"	1'-6 1/2"	2'-9 1/2"	1'-4 1/2"	3'-0 1/2"	1'-6 1/2"	2'-9 1/2"	1'-4 1/2"	3'-0 1/2"	1'-6 1/2"	2'-9 1/2"	1'-4 1/2"	3'-0 1/2"	1'-6 1/2"	2'-9 1/2"
	6	N-1800(7)	3'-1 1/2"	1'-6 1/2"	2'-9 1/2"	1'-4 1/2"	3'-0 1/2"	1'-6 1/2"	2'-9 1/2"	1'-4 1/2"	3'-0 1/2"	1'-6 1/2"	2'-9 1/2"	1'-4 1/2"	3'-0 1/2"	1'-6 1/2"	2'-9 1/2"
PIER 6	7	N-1800(7)	3'-1 1/2"	1'-6 1/2"	2'-9 1/2"	1'-4 1/2"	3'-0 1/2"	1'-6 1/2"	2'-9 1/2"	1'-4 1/2"	3'-0 1/2"	1'-6 1/2"	2'-9 1/2"	1'-4 1/2"	3'-0 1/2"	1'-6 1/2"	2'-9 1/2"
	8	N-1800(7)	3'-1 1/2"	1'-6 1/2"	2'-9 1/2"	1'-4 1/2"	3'-0 1/2"	1'-6 1/2"	2'-9 1/2"	1'-4 1/2"	3'-0 1/2"	1'-6 1/2"	2'-9 1/2"	1'-4 1/2"	3'-0 1/2"	1'-6 1/2"	2'-9 1/2"

NOTES:

NOTE 'A' SURFACES INDICATED ARE TO BE STRAIGHT AND TRUE; FINISH IF NECESSARY.

NOTE 'X' SURFACES INDICATED ARE TO BE MACHINED FLAT TO .01"/FT. (0.4" MAXIMUM)

ALL DIMENSIONS GIVEN THUS: 2.95 ARE DECIMALS OF AN INCH. FOR NOTES AND REFERENCE, SEE DRAWING D-1001-1A.

MATERIAL TO BE ASTM A588 (U.N.)

SHOP NOTE

HOLES: NONE

BOLTS: NONE

REQUIRED PER SHIPMENT		NO.	MARK	DESCRIPTION	LENGTH	REMARKS	ITEM	QTY
#1	#2	#3						
1	--	1	bbm	222 1/2" x 1.47 x .375	1	10% FOR BRG. TYPE 900	1B	24
1	--	1	bbn	222 1/2" x 1.49 x .351	1	10% FOR BRG. TYPE 900	1B	24
--	2	2	bbp	225 1/2" x 1.48 x 1.04	2	1% FOR BRG. TYPE 1100	1B	27
2	--	2	bbq	218.43 1/2" x 1.73 THK.		FOR BRG. TYPE 900	1A	27
--	2	2	bbt	220.11 1/2" x 1.83 THK.		FOR BRG. TYPE 1100	1A	25
SOLE PLATES - NON GUIDED								
1	--	1	bbw	214 1/2" x 1.46 x 1.04	1	3% FOR BRG. TYPE 350	1B	26
1	--	1	bbx	214 1/2" x 1.45 x 1.05	1	3% FOR BRG. TYPE 350	1B	26
2	--	2	bca	214 1/2" x 1.43 x 1.07	1	3% FOR BRG. TYPE 350	1B	26
4	--	4	ccb	214 1/2" x 1.42 x 1.08	1	3% FOR BRG. TYPE 350	1B	26
1	--	1	bcc	215 1/2" x 1.45 x 1.00	1	4% FOR BRG. TYPE 400	1B	25
2	--	2	bcd	215 1/2" x 1.43 x 1.03	1	4% FOR BRG. TYPE 400	1B	25
1	--	1	bce	215 1/2" x 1.42 x 1.04	1	4% FOR BRG. TYPE 400	1B	25
4	--	4	bcd	215 1/2" x 1.45 x 1.01	1	4% FOR BRG. TYPE 400	1B	25
--	1	1	bch	216 1/2" x 1.36 x 1.36	1	9% FOR BRG. TYPE 400	1B	23
--	5	5	bck	216 1/2" x 1.37 x 1.35	1	9% FOR BRG. TYPE 400	1B	23
--	6	6	bcy	225 1/2" x 2.21 x 1.61	2	1 FOR BRG. TYPE 1000	1B	18
--	4	4	bda	225 1/2" x 2.45 x 1.65	2	4% FOR BRG. TYPE 1100	1B	14
--	2	2	bdb	225 1/2" x 2.46 x 1.64	2	4% FOR BRG. TYPE 1100	1B	14
--	1	1	bdc	229 1/2" x 2.11 x 2.07	2	6 1/2% FOR BRG. TYPE 1500	1B	21
--	2	2	bdd	229 1/2" x 2.09 x 2.09	2	6 1/2% FOR BRG. TYPE 1500	1B	21
--	1	1	bdf	229 1/2" x 2.15 x 2.03	2	6 1/2% FOR BRG. TYPE 1500	1B	21
--	1	1	bdg	229 1/2" x 2.16 x 2.00	2	6 1/2% FOR BRG. TYPE 1500	1B	16
--	1	1	bde	229 1/2" x 2.21 x 1.97	2	6 1/2% FOR BRG. TYPE 1500	1B	16
--	1	1	bdk	233 1/2" x 2.45 x 2.11	3	1 FOR BRG. TYPE 1800	1B	13
--	1	1	bdl	233 1/2" x 2.43 x 2.13	3	1 FOR BRG. TYPE 1800	1B	13
--	1	1	bdl	233 1/2" x 2.41 x 2.15	3	1 FOR BRG. TYPE 1800	1B	13
--	1	1	bdp	233 1/2" x 2.37 x 2.19	3	1 FOR BRG. TYPE 1800	1B	15
--	1	1	bds	233 1/2" x 2.35 x 2.21	3	1 FOR BRG. TYPE 1800	1B	15
--	1	1	bdt	233 1/2" x 2.34 x 2.22	3	1 FOR BRG. TYPE 1800	1B	15
8	--	8	bdw	214 1/2" x 14GA.	1	3 1/2% A240 TYPE 304 FOR BRG. TYPE 350	1C	12
8	--	8	bdu	215 1/2" x 14GA.	1	4% A240 TYPE 304 FOR BRG. TYPE 400	1C	9
--	6	6	bfa	215 1/2" x 14GA.	1	9 1/2% A240 TYPE 304 FOR BRG. TYPE 400	1C	9
--	6	6	bfc	223 1/2" x 14GA.	2	0 1/2% A240 TYPE 304 FOR BRG. TYPE 1000	1C	6
--	6	6	bfd	224 1/2" x 14GA.	2	3% A240 TYPE 304 FOR BRG. TYPE 1100	1C	6
--	6	6	bff	228 1/2" x 14GA.	2	5 1/2% A240 TYPE 304 FOR BRG. TYPE 1500	1C	4
--	6	6	bfg	231 1/2" x 14GA.	3	0 1/2% A240 TYPE 304 FOR BRG. TYPE 1800	1C	3

NO. 1 REVISION altered as per 10-11-84 appv. DATE 10-11-84

805 Old Philadelphia Pike
Lancaster, Pennsylvania 17603
Phone 717/299-3333

A Subsidiary of HSA Industries, Inc.

POT BEARING DETAILS

I-395 BRIDGE OVER PENOBSCOT RIVER

I-395 BRIDGE STA. 164+60.00

PENOBSCOT COUNTY

STATE OF MAINE

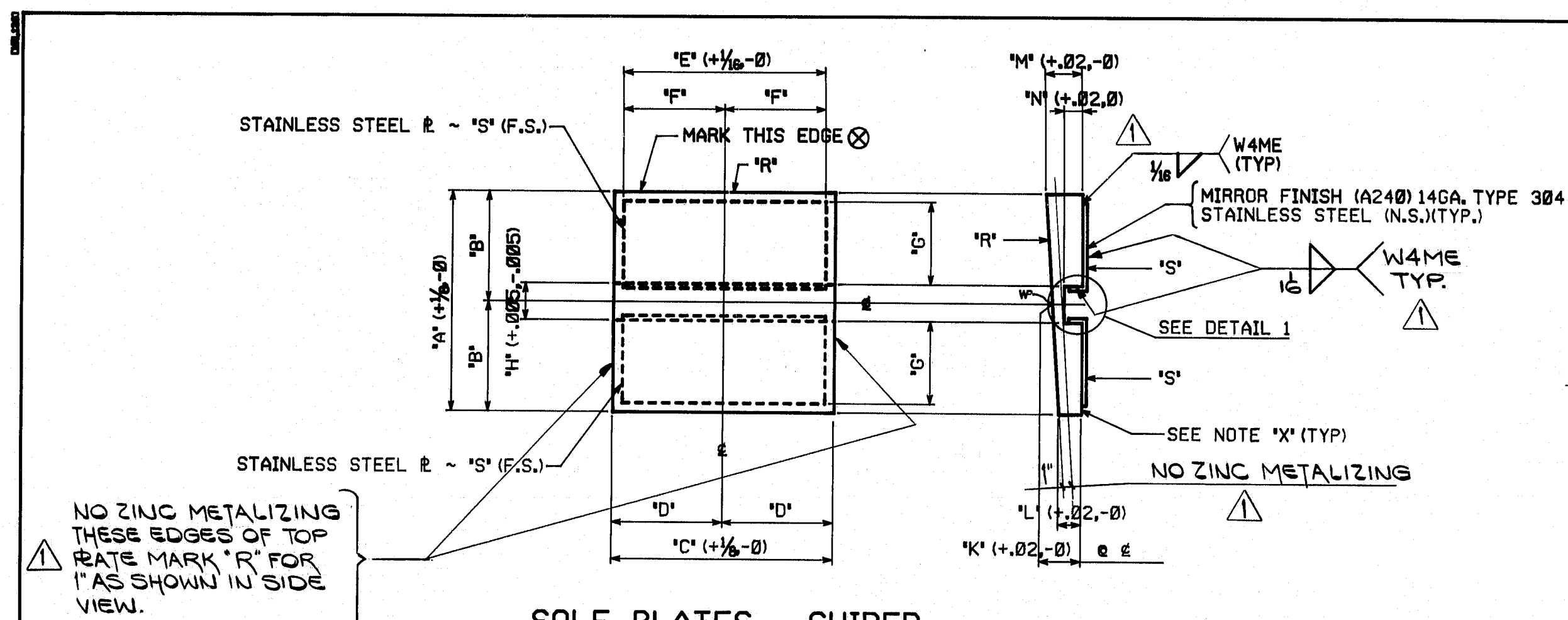
DEPARTMENT OF TRANSPORTATION

STATE CONTRACT OR REFUND: 6 CONTRACTOR: CIANBRO CORP.

IN CHARGE: HINKLE MADE BY: B.J.K. CHK'D BY: JCH DATE: 8-16-84

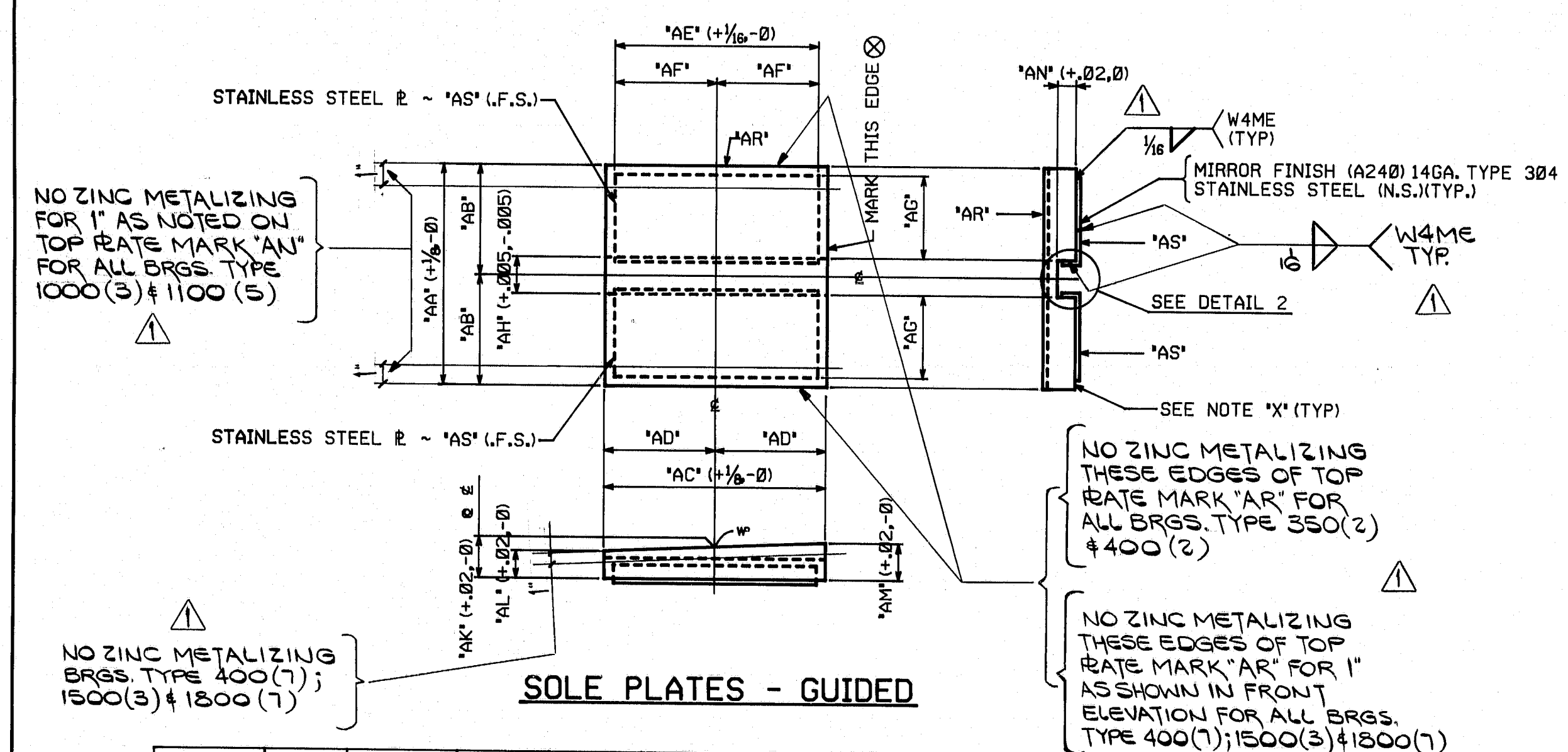
CONTRACT NUMBER: ME-84088-1,2,3 DRAWING NUMBER: D-1001-1D DATE: 7-2-84

R95-156



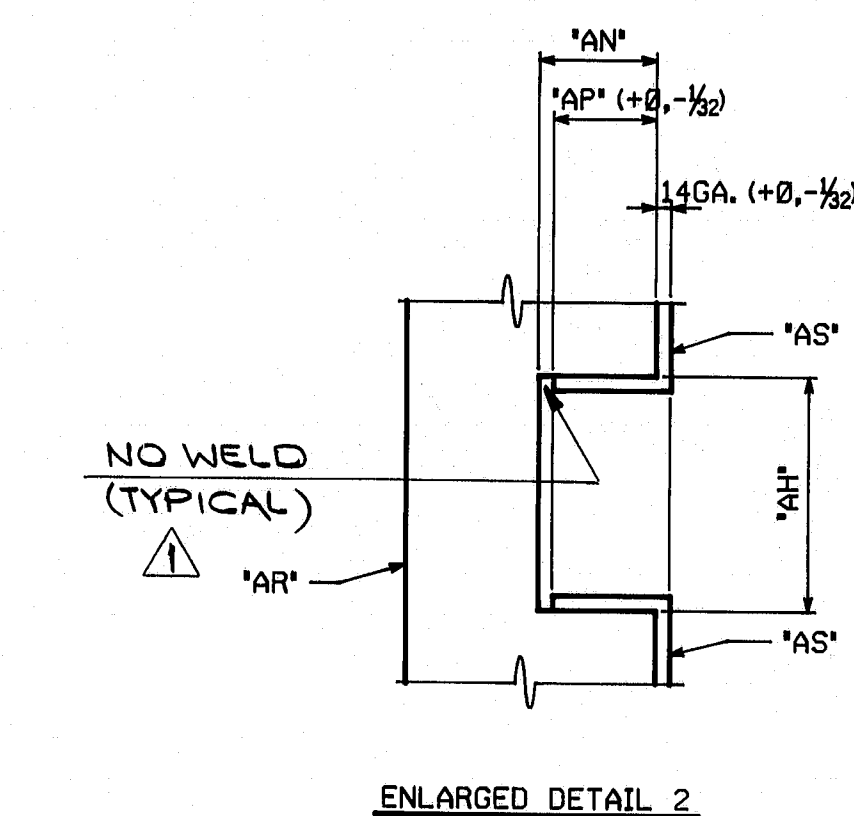
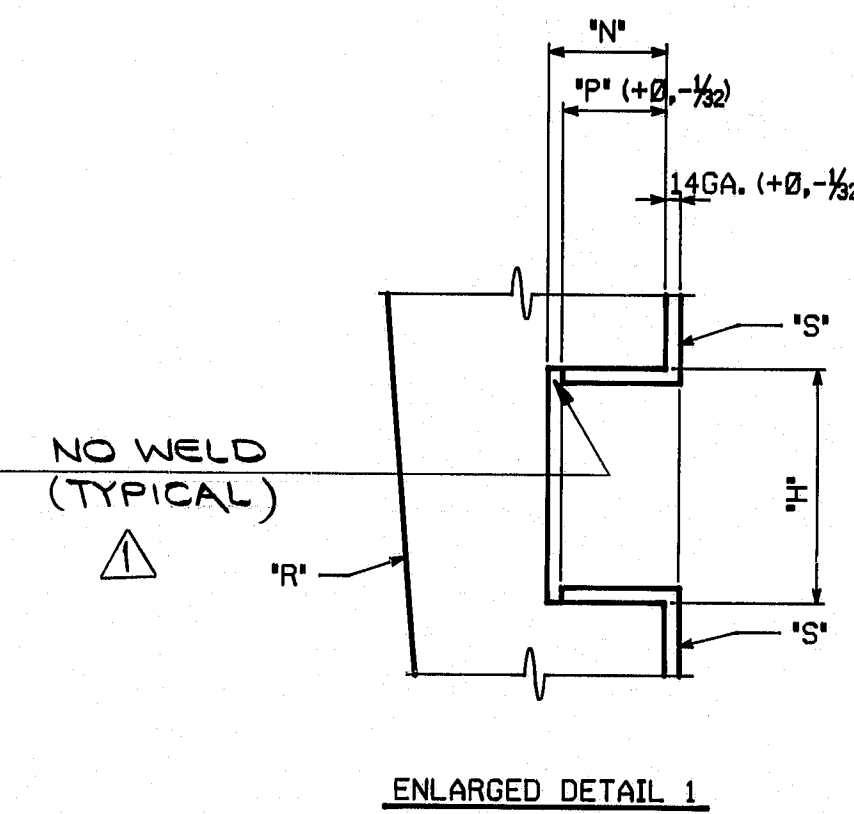
SOLE PLATES - GUIDED

LOCATION	GIRDER	BRG. TYPE	'A'	'B'	'C'	'D'	'E'	'F'	'G'	'H'	'I'	'J'	'K'	'L'	'M'	'N'	'P'	'R'	'S'
PIER 1	1	G-900(2)	1'-10 7/8	11 7/8	1'-11	11 1/2	1'-10 1/2	11 1/4	10 3/4	1.06	1.30	1.59	2.21	.75	%	bgb	bhc		
	2	G-900(2)													1.60	2.20		bgc	
	3,8,9,10	G-900(2)													1.63	2.17		bgd	
	5,6	G-900(2)	1'-10 7/8	11 7/8	1'-11	11 1/2	1'-10 1/2	11 1/4	10 3/4	1.06	1.30	1.61	2.19	.75	%	bgi	bhc		
PIER 5	1,2,3	G-1100(2)	2'-1 3/4	1'-0 1/8	2'-1 3/4	1'-0 1/8	2'-0 7/8	1'-0 7/8	11 1/8	1.31	2.01	1.86	2.16	.93	%	bgi	bhd		
	6	G-1100(2)													1.83	2.19		bgh	
	7	G-1100(2)													1.82	2.20		bgk	
	8	G-1100(2)	2'-1 3/4	1'-0 1/8	2'-1 3/4	1'-0 1/8	2'-0 7/8	1'-0 7/8	11 1/8	1.31	2.01	1.81	2.21	.93	%	bgm	bhd		



SOLE PLATES - GUIDED

LOCATION	GIRDER	BRG. TYPE	'AA'	'AB'	'AC'	'AD'	'AE'	'AF'	'AG'	'AH'	'AI'	'AJ'	'AK'	'AL'	'AM'	'AN'	'AP'	'AR'	'AS'
PIER 2	4,7	G-350(2)	1'-2 3/4	7 3/4	1'-3 3/4	7 3/4	1'-3 3/4	7 3/4	8 3/4	.81	1.25	1.07	1.43	.56	%	bfn	bgm		
ABUT. 1	4	G-400(2)	1'-3 3/4	7 3/4	1'-4 3/4	8 3/4	1'-4 3/4	8 3/4	7 3/4	.81	1.23	1.05	1.41	.56	%	bfn	bgp		
	7	G-400(2)	1'-3 3/4	7 3/4	1'-4 3/4	8 3/4	1'-4 3/4	8 3/4	7 3/4	.81	1.23	1.02	1.44	.56	%	bfn	bgp		
ABUT. 2	4,5	G-400(7)	1'-4 1/4	8 3/4	1'-9 3/4	10 3/4	1'-9 3/4	10 3/4	7 3/4	.81	1.66	1.35	1.97	.56	%	bfn	bgg		
PIER 6	4,5	G-1000(3)	2'-1 1/2	1'-0 1/4	2'-1	1'-0 1/2	2'-0 1/2	1'-0 1/4	11 1/8	1.06	1.91	1.61	2.21	.75	%	bfs	bgw		
PIER 7	4,5	G-1100(5)	2'-1 3/4	1'-0 1/8	2'-1 3/4	1'-0 1/8	2'-0 7/8	1'-0 7/8	11 1/8	1.31	2.05	1.65	2.45	.93	%	bfs	bgw		
PIER 4	4,5	G-1500(3)	2'-5 1/4	1'-2 3/4	2'-6 1/4	1'-3 3/4	2'-5 3/4	1'-2 3/4	1'-1 1/8	1.31	2.09	2.04	2.14	.93	%	bfs	bha		
PIER 3	4	G-1800(7)	2'-9	1'-4 1/2	3'-1	1'-6 1/2	3'-0 1/2	1'-6 1/4	1'-3 3/4	1.31	2.28	2.15	2.41	.93	%	bfs	bhb		
	5	G-1800(7)	2'-9	1'-4 1/2	3'-1	1'-6 1/2	3'-0 1/2	1'-6 1/4	1'-3 3/4	1.31	2.28	2.17	2.39	.93	%	bfs	bhb		



NOTES:

NOTE 'A': SURFACES INDICATED ARE TO BE STRAIGHT AND TRUE; FINISH IF NECESSARY.

NOTE 'X': SURFACES INDICATED ARE TO BE MACHINED FLAT TO .01"/FT. (0.4" MAXIMUM)

ALL DIMENSIONS GIVEN THUS: 2.21 ARE DECIMALS OF AN INCH. FOR NOTES AND REFERENCE, SEE DRAWING D-1001-1A. MATERIAL TO BE ASTM A588 (U.N.)

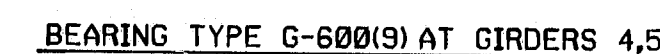
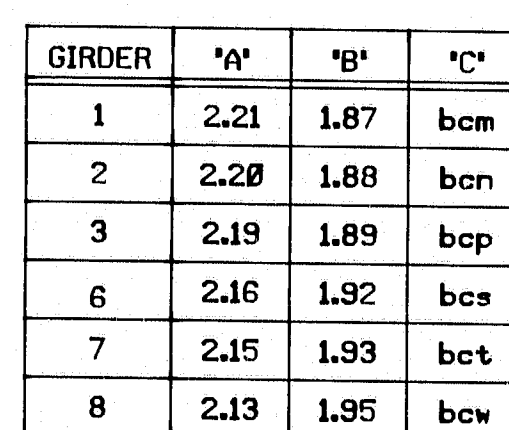
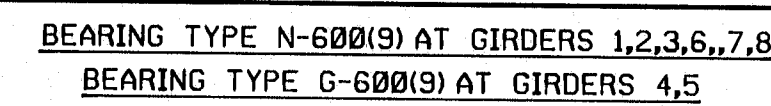
SHOP NOTE

HOLES: NONE
BOLTS: NONE

REQUIRED PER SHIPMENT		BILL OF MATERIAL										FED. ROAD DIV. NO.		STATE		FED. AID PROJ. NO.	
#1	#2	#3	NO.	MARK	DESCRIPTION	LENGTH	REMARKS	ITEM	WEIGHT	EA.		1	ME.	1-10-395-8182176			
SOLE PLATES - GUIDED																	
2	--	--	2	bfn	14 3/4 x (1.43 x 1.07)	1	3%	FOR BRG. TYPE 350	26								
1	--	--	1	bfn	15 1/2 x (1.41 x 1.05)	1	4%	FOR BRG. TYPE 400	25								
1	--	--	1	bfn	15 1/2 x (1.44 x 1.02)	1	4%	FOR BRG. TYPE 400	25								
--	--	2	2	bfn	16 1/4 x (1.97 x 1.35)	1	9%	FOR BRG. TYPE 400	23								
--	--	2	2	bfs	25 1/2 x (2.21 x 1.61)	2	1	FOR BRG. TYPE 1000	18								
--	--	2	2	bft	25 1/2 x (2.45 x 1.65)	2	4%	FOR BRG. TYPE 1100	14								
--	--	2	2	bfw	29 1/4 x (2.14 x 2.04)	2	6%	FOR BRG. TYPE 1500	21								
--	--	1	1	bfs	33 x (2.41 x 2.15)	3	1	FOR BRG. TYPE 1800	13								
--	--	1	1	bgs	33 x (2.39 x 2.17)	3	1	FOR BRG. TYPE 1800	13								
1	--	--	1	bgs	22 1/2 x (2.21 x 1.59)	1	11	FOR BRG. TYPE 900	19								
1	--	--	1	bgs	22 1/2 x (2.20 x 1.60)	1	11	FOR BRG. TYPE 900	19								
4	--	--	4	bgs	22 1/2 x (2.17 x 1.63)	1	11	FOR BRG. TYPE 900	19								
2	--	--	2	bgs	22 1/2 x (2.19 x 1.61)	1	11	FOR BRG. TYPE 900	19								
--	--	3	3	bgs	25 1/2 x (2.16 x 1.86)	2	1%	FOR BRG. TYPE 1100	17								
--	--	1	1	bgh	25 1/2 x (2.19 x 1.83)	2	1%	FOR BRG. TYPE 1100	17								
--	--	1	1	bgi	25 1/2 x (2.20 x 1.82)	2	1%	FOR BRG. TYPE 1100	17								
--	--	1	1	bgm	25 1/2 x (2.21 x 1.81)	2	1%	FOR BRG. TYPE 1100	17								
4	--	--	4	bgn	7 1/2 x 14GA.	1	3%	A240 TYPE 304 FOR BRG. TYPE 350	20								
4	--	--	4	bgs	7 1/2 x 14GA.	1	4%	A240 TYPE 304 FOR BRG. TYPE 400	19								
--	--	4	4	bgs	7 1/2 x 14GA.	1	9%	A240 TYPE 304 FOR BRG. TYPE 400	18								
--	--	4	4	bgw	11 1/2 x 14GA.	2	0%	A240 TYPE 304 FOR BRG. TYPE 1000	15								
--	--	4	4	bgw	12 1/2 x 14GA.	2	3%	A240 TYPE 304 FOR BRG. TYPE 1100	13								
--	--	4	4	bha	14 1/2 x 14GA.	2	5%	A240 TYPE 304 FOR BRG. TYPE 1500	11								
--	--	4	4	bhb	16 1/2 x 14GA.	3	0%	A240 TYPE 304 FOR BRG. TYPE 1800	8								
16	--	--	16	bhc	11 1/2 x 14GA.	1	10%	A240 TYPE 304 FOR BRG. TYPE 900	16								
--	--	12	12	bhd	12 1/2 x 14GA.	2	0%	A240 TYPE 304 FOR BRG. TYPE 1100	14								

NO. 1	REVISION altered as per 10-11-84 app'.	DATE 10-17-84
HIGH STEEL STRUCTURES, INC. 800 Old Portsmouth Pike Portsmouth, New Hampshire 03803 Phone 603/293-5800 A Subsidiary of High Industries, Inc.		
POT BEARING DETAILS		
I-395 BRIDGE OVER PENOBSCOT RIVER		
I-395 BRIDGE STA. 164+60.00		
PENOBSCOT COUNTY		
STATE OF MAINE		
DEPARTMENT OF TRANSPORTATION		
STATE CONTRACT OR REF. NO. 6	CONTRACTOR CIANBRO CORP.	
IN CHARGE: HINKLE	MADE BY: B.J.K.	CHECKED BY: JCH
DATE: 2-16-84	DATE: 7-2-84	
CONTRACT NUMBER: ME-84088-1,2,3	DRAWING NUMBER: D-1001-1E	



R95-157



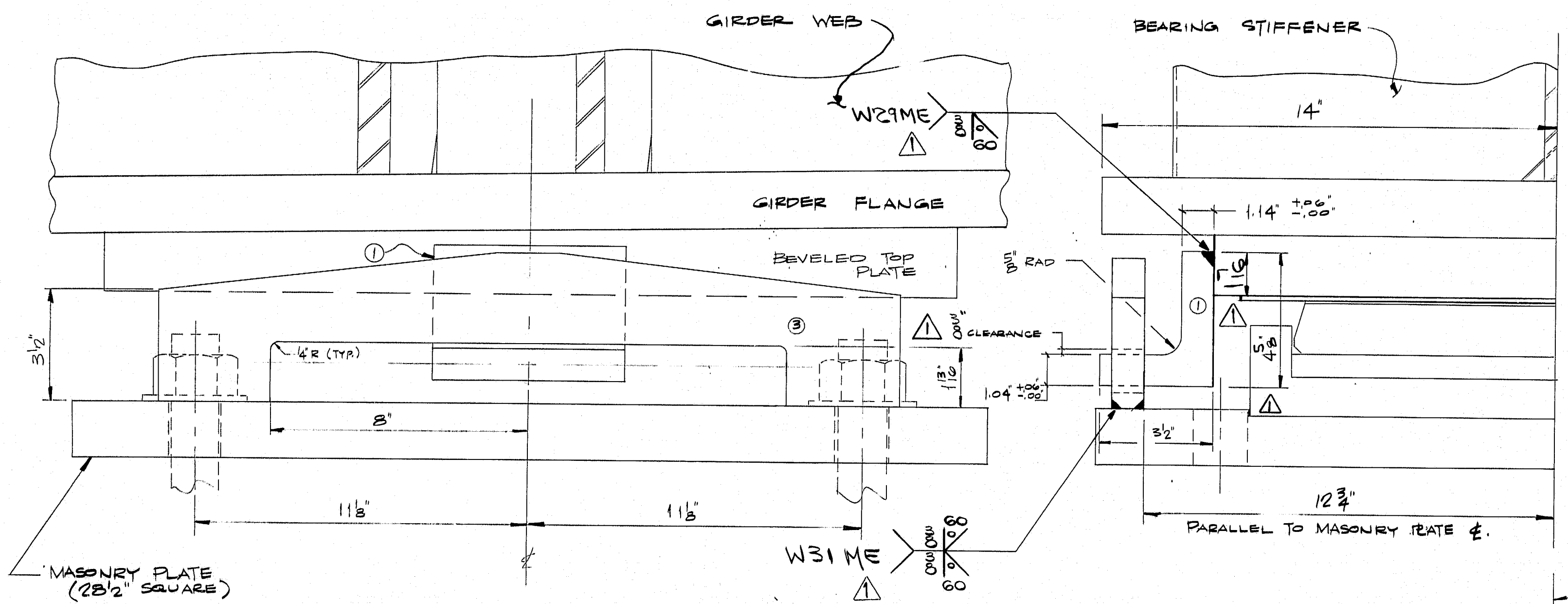
R95-158

		FED. ROAD DIV. NO.	STATE	FED. AID PROJ. NO.		
		1	ME.	I-10-395-(8/21/7)		
BILL OF MATERIAL						
NO.	MARK	DESCRIPTION	LENGTH	REMARKS	ITEM	SW REV EA
		MASONRY PLATES		FOR BRG. TYPE 600		
16	bhf	BAR 4 1/4" x 1'	1	11	ASTM A514	1E 28
8	bhg	2 28 1/2" x 1.71	2	4 1/2		1A 8
		SOLE PLATES		FOR BRG. TYPE N-600(13)		
1	bcm	2 21 3/4" x (2.21 x 1.87)	2	2 1/2		1B 20
1	bcn	2 21 1/4" x (2.20 x 1.88)	2	2 1/2		1B 20
1	bcp	2 21 1/4" x (2.19 x 1.89)	2	2 1/2		1B 20
1	bcs	2 21 1/4" x (2.16 x 1.92)	2	2 1/2		1B 22
1	bct	2 21 1/4" x (2.15 x 1.93)	2	2 1/2		1B 22
1	bcw	2 21 1/4" x (2.13 x 1.95)	2	2 1/2		1B 22
6	bfb	2 18 3/8" x 14 GA.	2	2	A240 TYPE 304	1C 7
12	bhh	2 1 1/4" x 3 1/2" x (1.14 x 1.04)	0	6	MADE FROM SOLID BLOCK (ASTM A514)	1C 20
		SOLE PLATES		FOR BRG. TYPE G-600(13)		
2	bfp	2 21 1/4" x (2.17 x 1.91)	2	2 1/2		1B 22
4	bgf	2 9 3/8" x 14 GA.	2	2	A240 TYPE 304	1C 17
4	bhh					

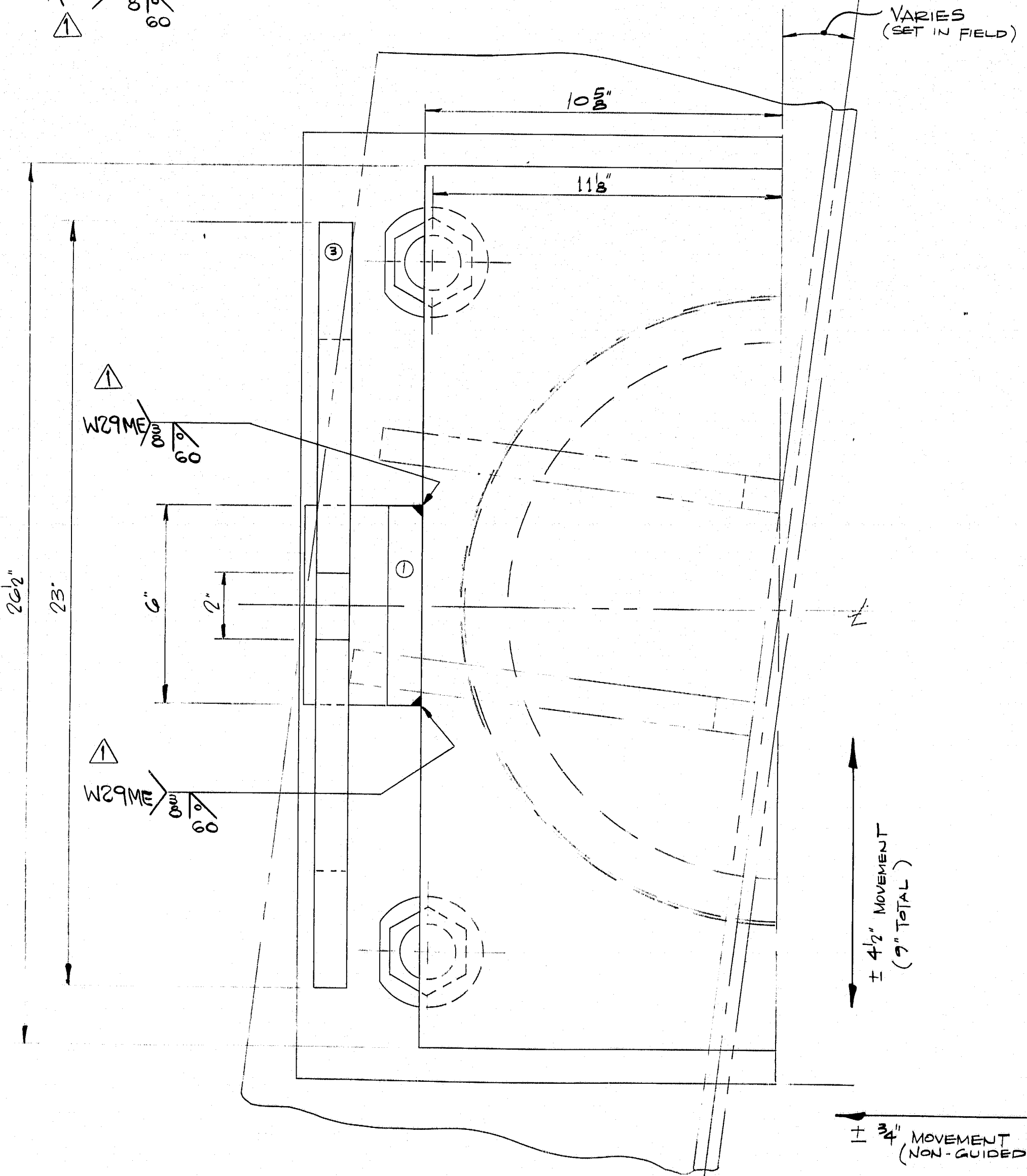
ALL MATERIAL REQUIRED FOR SHIPMENT 22

NO. 	REVISION altered as per 10-11-84 appv	DATE 9-28-84 10-17-84
HIGH STEEL STRUCTURES, INC. 		808 Old Philadelphia Pike Lancaster, Pennsylvania 17603 Phone 717/299-852
		A Subsidiary of High Industries, Inc.
POT BEARING DETAILS		
I-395 BRIDGE OVER PENOBSCOT RIVER		
I-395 BRIDGE STA. 164+60.00		
PENOBSCOT COUNTY		
STATE OF MAINE		
DEPARTMENT OF TRANSPORTATION		
STATE CONTRACT OR REF. NO. 6 CONTRACTOR CIANBRO CORP.		
IN CHARGE HINKLE	MADE BY B.J.K.	CHECKED BY JCH. DATE 8-17-84
CONTRACT NUMBER ME-84088-2	DRAWING NUMBER	D-1001-1F

AF 22682A



SIDE ELEVATION



PLAN VIEW
(HALF OF DETAIL SHOWN)

- NOTES:
1. WORK THIS DRAWING WITH D-1001-1A.
 2. UPLIFT PER BEARING: 45K MIN.
 3. DIMENSIONS & CLEARANCES GIVEN ALLOW FOR REMOVAL OF BASE/CYLINDER. ALSO, ALLOWS FOR MOVEMENT TO EXTREME LIMIT AS REQUIRED ON CONTRACT DRAWINGS.

		FED. ROAD DIV. NO.	STATE	FED. AID PROJ. NO.		
BILL OF MATERIAL						
NO.	MARK	DESCRIPTION	LENGTH	REMARKS	ITEM	WEIGHT
	①	$4\frac{5}{8} \times 2\frac{1}{2} \times (11\frac{1}{4} \pm .04)$	—	6" $\sqrt{\text{ASTM A514}}$		
	②	$4\frac{3}{4} \times 1"$	11"	MACHINE ANGLE FRONT SHOLD PISE $\sqrt{\text{ASTM A514}}$		

SHOP NOTE

HOLES: REFER TO
BOLTS: DWG. D-1001-1A
PAINT:

R95-159

CODE: 6000

NO. 1	REVISION altered as per 10-11-84 appv	DATE 9-28-84 10-17-84
HIGH STEEL STRUCTURES, INC.		
1905 Old Philadelphia Pike Lancaster, Pennsylvania 17603 Phone 717/299-6211		
A Subsidiary of High Industries, Inc.		
STATE OF MAINE - DEPT. OF TRANSPORTATION		
I-395 BRIDGE OVER PENOBSCOT RIVER		
BANGOR - BEEFER PENOBSCOT COUNTY		
UPLIFT DETAILS FOR PIER 2 - SPAN 3		
BEARING DETAILS BY BERMAZ CORP. INT'L, FAIRFIELD, N.J. 07004-4		
STATE CONTRACT OR REF. NO. 6	CONTRACTOR CIANBRO CORP.	
IN CHARGE:	MADE IN U.S.A. CHK. D. BY: B.G.B.E. BY: DATE: 8-6-84	
CONTRACT ME-84088-1,2,3	DRAWING NUMBER: D-1003-1A	